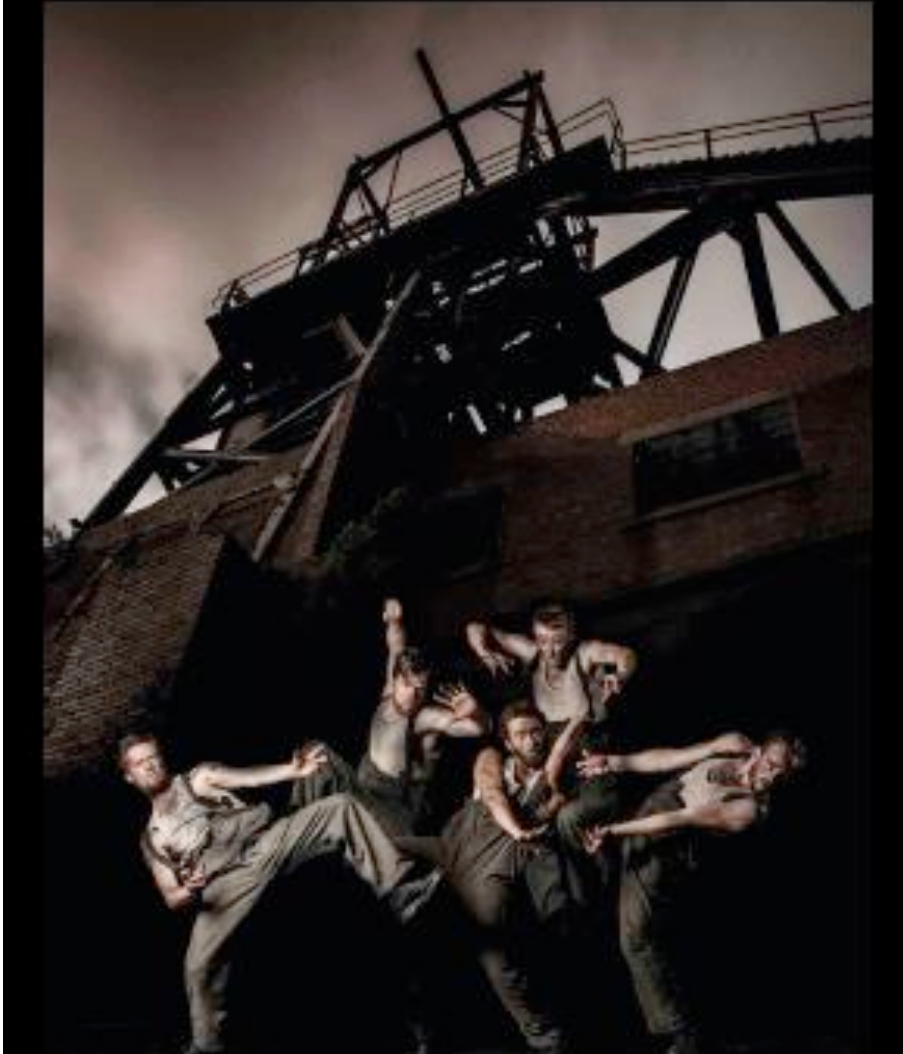


GARY CLARKE COMPANY

COAL



TOURING TECHNICAL RIDER 2016 & 2017

PRODUCER / PROMOTER — ANNABEL DUNBAR

Email: annabeldw@yahoo.com Phone: 07802 624949

PRODUCTION MANAGER — Nia Wood

Email: niawood@yahoo.co.uk Phone: 07970 199758

1. Overview

Coal's cast comprises seven professional performers, four community cast members and five brass musicians (16 people on stage). Full cast list can be supplied separately.

The running time is eighty minutes with no interval.

COAL is in three acts:

- Act 1: Above Ground: The Domestic Scene/ Live Brass
- Act 2: Below Ground: At the Coal face
- False Interval
- Act 3: The Aftermath: Full company including community Women/ Live Brass

Latecomers can be admitted at a time agreed in advance by the Artistic Director, preferably to available seats near the entrance rather than booked seats.

There is a false interval between act 2 and act 3 during which the community cast members will offer refreshments to the audience (see section 4.6 for details), and a raffle will take place. Raffle tickets will be given out by a company member while the audience enters, a prize will be given to the winning ticket holder by one of the performers.

Filming or photography may be permitted but only with prior consent from the company. GCC reserves the right to make archive documentation of their show at any time.

2. Touring crew

Production Manager/re-lighter: Nia Wood, operating lighting and sound.

Sound/general technician: Elb Hall, ASM during show.

Artistic Director, Gary Clarke, will tour to all venues. Musical Director (Steven Roberts) and Producer (Annabel Dunbar) will tour to some venues.

3. Transport

We tour our set elements and dance floor in a long wheel base van. If parking is not available at the theatre please advise on the nearest alternative parking for the duration of our stay.

4. Staging

4.1. Performance Space:

We require a performance area, **not including wing space, of 10m x 10m**, but the performance can be adapted to smaller spaces, minimum 8m by 8m **not including wing space**. Please call to discuss spaces smaller than 10m x 10m in more detail.

4.2. Floor:

The performance area and wings must be clean and free from obstructions. The floor must be sprung or semi-sprung.

4.3. Dance Floor:

We tour a black dance floor 10m x 10m.

4.4. Back wall:

The show ideally uses an uncovered black back wall, with film projected onto the wall.

If the back wall is not accessible or suitable we will require a **flat full black** to be hung upstage. Please advise if the back wall is not usable for projection.

4.5. Masking:

We require 2 pairs of flat black masking legs upstage right and upstage left. Other masking will be confirmed on a venue by venue basis. The show is designed for an open stage, with projection on the back wall. Please advise if your stage has unusual features such as walls painted in any other colour than black, or maintained lighting in the side-stage.

4.6. Set and props:

- We tour a number of props including pots and pans, a meat cleaver, some hosing, as well as four shovels, two tables, wooden chairs, a blackboard and a push bike.

Note: the meat cleaver is used by one of the performers to chop a cabbage. Please see risk assessments.

- **We require two stage weights** to be provided by the venue to brace the blackboard.
- The blackboard will be painted daily by one of the Coal crew. We tour paint and brushes.
- We also tour a number of wooden palettes and pieces of timber.
- Coal is used on stage in the production, it is confined to a small area, and contained within a tarpaulin, but as it is handled by the dancers it will spread a little – please see risk assessments.

Note: The coal dust can be removed with a mop and warm water. If you have any concerns please contact the production manager.

- There will be 5 buckets containing 3 inches each of water, bought onstage by the community cast to wash the dancers. There is no water spilled onstage.
- Also used is a bucket of coal DSR with a small amount of water added, this is just poured into another bucket as part of the choreography and not spilled onstage.

Food products used:

Potatoes are peeled into a bucket. A cabbage is chopped with a small cleaver. The miners eat bananas onstage. Refreshments are offered to the audience as part of the false interval. A performer drinks beer (cold tea is used) from a glass.

See risk assessments.

Note: The refreshments offered are biscuits and tangerines. All the biscuits are recognizable packeted products, and all have been checked for allergens (wheat and Soya only). They will be a selection consisting of Wagon Wheels, Blue Riband, Tunnocks tea cakes, Tunnocks caramel wafers and Jammy Dodgers served on trays covered in tin foil. Please advise of any in-house policies affecting this part of the performance.

All food products are stored appropriately.

All set and props not for consumption are inherently flameproof or treated with flame check.

4.7. Access to the auditorium

During the false interval, the Pit Women will come out into the auditorium. If the auditorium is not at the same level as the stage we will require the venue to provide **steps down from the stage at both sides** of the stage.

4.8. Cleaning the stage:

We tour towels for cleaning the stage. We will require the venue to provide use of a wide broom, a mop and bucket, and hot water.

5. Lighting

Please see attached lighting plan and detail.

We tour a showfile for ETC Eos family consoles. If you have a different console, please let us know and we will send a print out and a pre-plot will be required before the company's arrival. We will also require a lighting programmer for non-Eos family consoles.

We require a production desk in the auditorium for plotting, from fit-up day until after the dress. We will relocate to your standard control position for shows.

We tour all colour and gobos. Please provide 8 x B size gobo holders for the specified profiles.

Secondary Lighting: COAL features some very low lighting states. A lot of spill from venues' secondary lighting will affect the look and feel of the performance. Please contact us to discuss any potential problems regarding this.

We will require full control of the house lights from the lighting desk, please advise if this is not possible. Extra 'theatrical' lighting will be added, to wash the auditorium for the 'interval' scene. The nature of this lighting will depend on the auditorium and will be decided on the company's arrival.

Gary Clarke Company

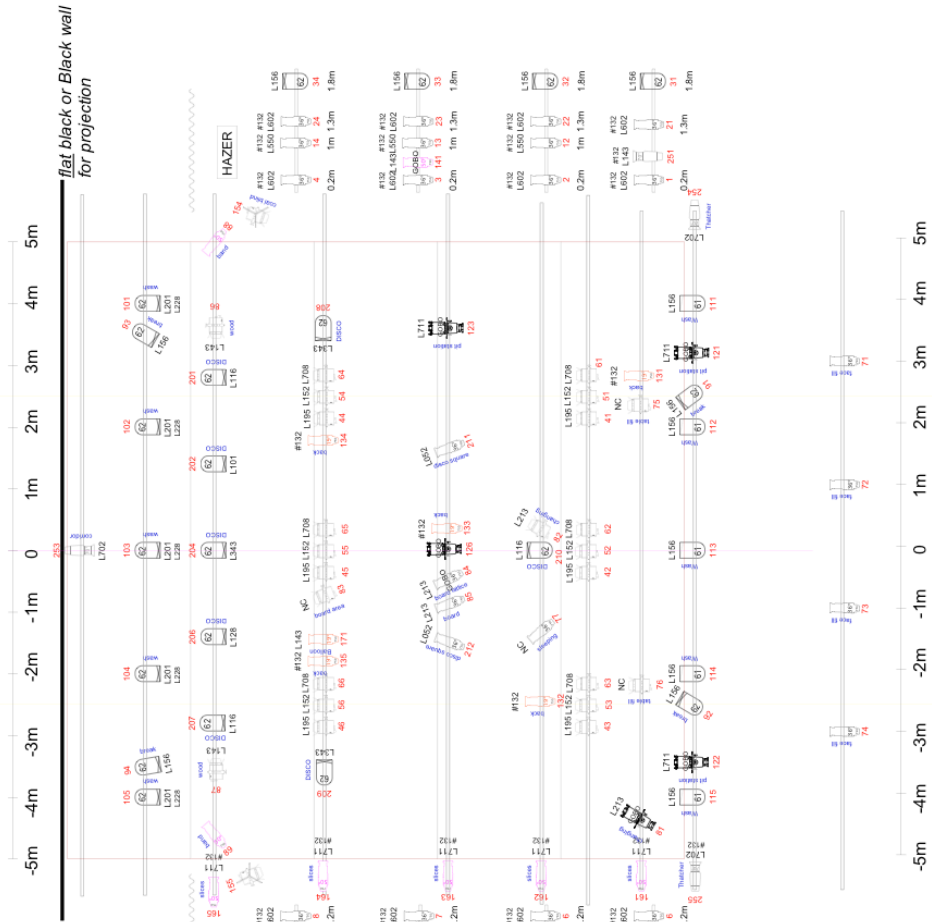
COAL

Generic Lighting Plan
 Updated 23 Feb 2016
 Plan to scale 1:50 @ A2

Notes:	used
We require the use of two hazers positioned USA and USL	centata F 26
Gabos would ideally be in 2550 Zooms but if not available 30° profiles should be used.	Source 4 70° 5
Please provide 8 B size Gabo holders for the specified profiles.	Source 4 50° 9
If the back wall is not suitable for projection, we will require a flat full back to be hung upstage of the setting line. approx. 10m upstage of the setting line.	Source 4 36° 27
	Source 4 19° 6
	SA 25/50 5
	Par64 CP62 27
	Par64 CP61 5



Lighting Design: Charles Webber
 Relights: Nic Wood
 07970199758
 niawood@yahoo.co.uk



5.1 Haze

The second act requires a large amount of haze.

We require **2 Haze machines** to be provided by the venue, ideally positioned upstage left and right, controlled by DMX. We will require the stage area and any other affected areas' alarm systems to be isolated for use of haze during all rehearsals and shows.

6. Sound:

COAL has a quadraphonic soundtrack for use in venues which have Qlab installed. Main stereo Left and Right send to the main PA and onstage monitors. Surround Left and Right send, where possible, to the rear of the auditorium.

In venues without Qlab 3 installation, our playback source is an Apple Mac Mini running our own Qlab 3 with two audio channels Left and Right through a PC balance box, requiring two XLR cables to input to the house PA.

We run a simultaneous backup version of Qlab on a laptop during the show, requiring a stereo minijack cable into the house PA. These two channels are normally muted.

The brass band does not require any amplification.

A section of text may require the use of a rifle mic positioned stage right.

NOTE: The sound position can be in your usual control room or in the auditorium if there are windows that cannot open in this room. As **we have one operator for sound and lighting, both consoles will need to be within easy reach of each other.** Please advise if this is not possible so that crew calls can be adjusted to include a sound operator.

Comms: We require wireless comms for the ASM during rehearsals and the show. Alternatively we will require wired comms to be installed at the entrances to the stage.

7. Projection

COAL includes a projected film section in Act 3 which outputs either from the venue's QLab installation or from our Mac Mini's VGA. We require a **projector to be provided by the venue**, preferably 10K Lumen (minimum 6k). **Please provide a VGA cable to the control position.**

Projection image must be approx. 8m wide (16:9) on the back wall, depending on the space.

A blackout card is required with DMX control.

Please let us know as soon as possible if you are unable to provide a suitable projector with DMX shutter.

8. Technical Team and local crew requirements:

We have two touring crew: a production manager/re-lighter, and one technician.

8.1. Fit up:

We require at least 3, preferably 4, venue crew depending on theatre facilities. These should be multi-skilled technicians, capable of rigging and focusing lighting, and projection, and integrating our playback system into your sound rig.

8.2. Performance team:

COAL's re-lighter operates both lighting and sound. **Both lighting and sound must be operated from the same position.**

The second Coal technician will be backstage during the performance, with some cues onstage.

We require one venue duty technician only for the running of our show.

If applicable a flyman will also be called.

Schedules will be agreed at least three weeks in advance.

8.3 Proposed Schedule:

Day 1) 9am – 6pm: 3 crew
7pm – 10pm: 2 crew

09.00 Load in and lay dance floor/commence lighting rig,
09.00 sound set-up, set up projector
13.00 *Lunch*
14.00 Rig booms
14.00 Sound control connected to in house rig/ check system
16.00 Patch LX, set up for focus.
18.00 *Break*
19.00 Focus LX, set up props, end of day sweep and mop
22:00 END CALL

Day 2) 9am – 10pm: 1 crew

09.00 Check plot and modify as required/sound check
09.00 Dancers warm up in separate studio
10.00 Cue to cue with dancers for lighting and spacing
13.00 *Lunch*
14.00 Community cast on stage for familiarization/rehearsal with band
16.30 Dress
18.00 *Break – end call: community women and brass*
19.00 Tech notes with cast
22:00 END CALL

Day 3) 10am – 10pm: 1 crew

10.00 Tech notes, no cast/reset/clean stage
13.00 *lunch*
14.00 Dancers class onstage/ rehearsal
17.00 Notes onstage with community cast
18.00 Break
19.00 pre-show checks
20.00 SHOW 1
21:20 Lights down/post-show talk

Day 4) 2pm – 11.30pm: 1 crew
8pm – 11.30pm: 1 crew

14.00 Dancers class onstage/ rehearsal
17.00 Notes onstage with community cast
18.00 *Break*
19.00 pre-show checks
20.00 SHOW 2
21:20 Lights down/commence get-out
23.30 END CALL

Performance time: 19.30 or 20.00. Please contact us to discuss different performance times and schedules.

Crew calls are based on our minimum show requirements. Crew calls do not take into account in-house staffing policies. Get-out calls do not take into account the venue's de-rig or re-instate time.

9. Wardrobe:

We require access to your wardrobe facilities on all show days. Please provide the use of a washing machine, dryer and iron with ironing board. Please let us know at the earliest possible convenience if these facilities are not available in the venue, and the location of the nearest alternative. Laundry can be done by the production team if in-house wardrobe staff are not available.

No dressers are required for the show.

10. Dressing rooms

4 dressing rooms are required for the cast as follows:

- Male professional dancers (5 people)
- Female professional dancers (2 people)
- Brass musicians (5 people)
- Community women performers (4 people)

The dressing rooms must have toilet and shower facilities.

Clean towels must be provided by the venue for the professional dancers for every performance.

Water, clothes rails and tea/coffee making facilities are required in all dressing rooms.

11. Rehearsal space:

We require 4 days of additional rehearsal space (10m x 10m minimum with sprung floor) for Brass & Community cast plus professionals as follows:

Pre Get in: Weekend before performances for intensive rehearsals with the local cast of community women – details to be negotiated by GCC Producer and Venue Programmer.

Day 1 (get in)	10.00 – 18.00	Dancers' rehearsal.
Day 2 (Dress day)	10.00 – 18.00	Community women rehearsal.

Thank you in advance and we look forward to working with you.

If you have any questions regarding any technical aspect of the performance, please contact the production manager Nia Wood.